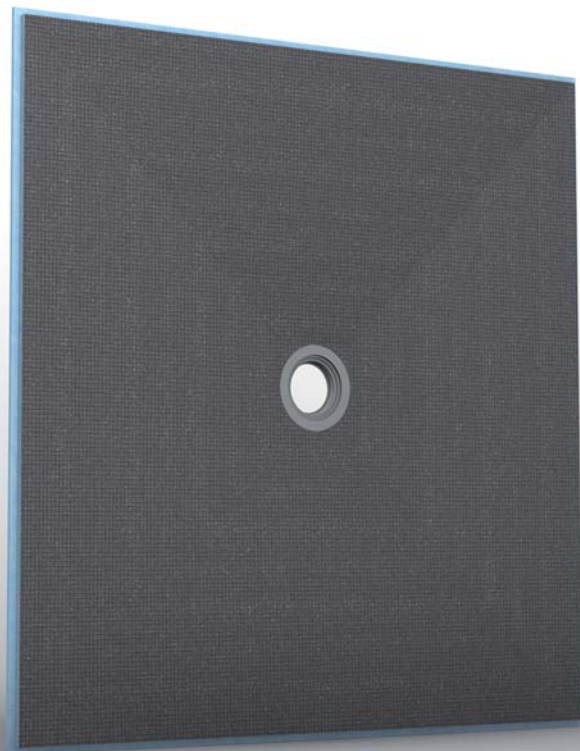


Assembly Instruction

wedi Fundo *Liquo* | For floor level and barrier free
shower floor installations





wedi® Fundo Shower System-Ligno

Overview & General Product Description of the wedi Fundo Shower Systems

All wedi® Waterproof Shower Systems including point and linear drain models offer reliable, cost-efficient solutions for constructing 100 % waterproof and mold proof showers. The product systems are entirely waterproof due to its XPS extruded polystyrene foam core. These systems are easy and clean to install due to its high prefabrication level. They open up a whole new world of design possibilities for showers, wet areas and baths when customized to fit your jobsite requirements.

wedi Shower Systems blend the traditional values of design flexibility and robustness as previously only enjoyed with mortar bed installations, while offering added values that come with state-of-the-art material and manufacturing technologies. These added values come in form of many performance advantages. Especially over traditional mortar bed installations or over other currently known methods for building showers such as those using sheet – or liquid waterproofing membranes in an attempt to manage water exposure. The most unique advantage is the complete and natural core waterproofness of the wedi product and its entire assembly. Every detail of the assembly is part of the wedi waterproofing approach: even down to the factory integrated drain parts. The concept of the wedi Fundo Shower System's water management describes a true "water out" performance. Neither products nor the assembly of the wedi Fundo shower system is subjected to the risks so commonly found in other methods of shower installation. When installing wedi Fundo Shower Systems in combination with wedi building panels, the proprietary wedi joint sealant and any of our curbs, niches or seats accessories, you can eliminate the following worries altogether:

- No overlapping sheet waterproofing seams with just thinset in between
- No risk of forming pinholes as with installation of very thin liquid membranes
- No weepholes and clogging as with liner installations
- No liner cracks due to aging or exposure to elements
- No risky liner seams in larger size showers nor any risky corner liner tapes
- No mold or discoloration worries as with absorbing and permanently wet mortar beds



These added values and its detail perfections eliminate the technical concerns in shower installations. But this is not where wedi shower systems stop offering its added values: The wedi Fundo shower system adds to your productivity and enables you to provide real value to your customers: Our wedi Fundo Shower systems reduce the installation time for just the shower floor from a 2–3 day process (includes drying times) to only 30 minutes when compared to traditional methods built with pre slope, vinyl liner and final mortar bed. wedi helps you to turn showers into service quicker, cleaner, safer. The exact and consistently shaped slope fields support perfection in tile setting and design. The cement based resin surface coatings on our products provide a great bond surface for any tile, stone and many other materials. Using any cement based thinset adhesives in installation. The insulation properties of the extruded foam core of our wedi systems keep the tile warmer on the floor and add to better insulation of the wall. And all this under one warranty for the entire shower from floor to wall.

wedi Fundo Ligno is designed to provide for a low profile base thickness of only $\frac{3}{4}$ ". This allows for a fast and flush installation into a subfloor assembly without cutting into floor joists. The system is designed to work without a curb. Enjoy the ease of installation without creating a structural hazard because you maintain the structural subfloor panels installed between floor joists under the wedi Fundo Ligno. Because barrier free showers may be exposed to heavy point loads (e.g. wheel chair), you can confidently rely on the structural strength of the wedi base and subfloor as well as the wedi Fundo's traditional strong cement based surface for ideal tile bond using any suitable cement based tile adhesives or grouts. As always with wedi Fundo Shower Systems, wedi Fundo Ligno is designed to interlock and work with wedi Building panels, wedi Joint Sealant, wedi Fasteners, wedi Seats and Benches, wedi Niches and many more accessories, that truly complete your shower installation and waterproofing system. The installation is fast, modular but customizable, and covered by wedi's full system warranty.



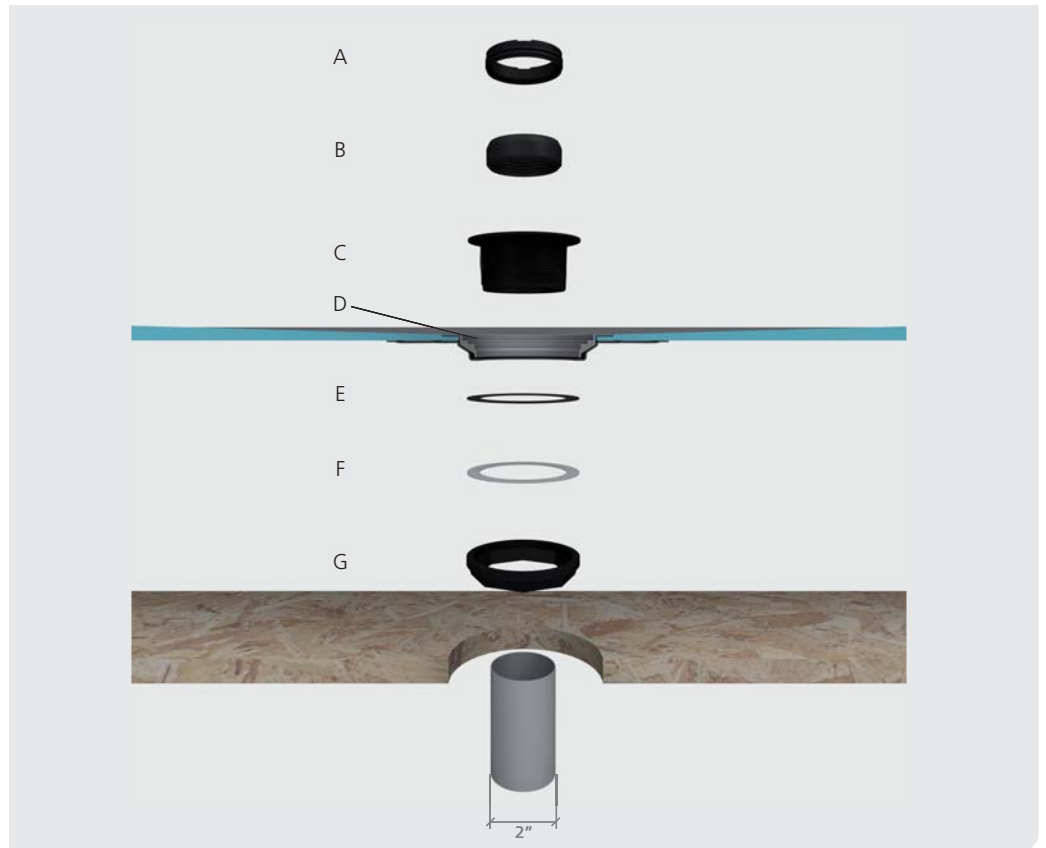
Drain to Base Assembly

Legend

- A Caulking nut
- B Rubber caulking gasket
- C Drain body
- D wedi sealant
- E Rubber gasket
- F Fiber gasket
- G Locking nut

Optionally a glue drain can be obtained from wedi. For a cement glue connection, the floor pipe must be cut 2 7/8 inches below the surface of the subfloor.

Optionally a brass drain can be obtained from wedi. The installation proceeds as shown for the standard drain provided with each Fundo base.



Tools

- Bucket
- Notch Trowel
- Drill with Thinset Mixer
- Utility Knife
- Straight Edge/T Square 5 ft or longer
- Speed Square
- Caulk Gun
- Handsaw
- Flat Head Screwdriver
- Screw gun
- Solid Putty Knife
- Paper Towels
- Level
- Circular Saw / Jigsaw
- Saw Horse
- Tape Measure
- Permanent Marker
- Extension Cord for Powertools
- Shop vacuum cleaner
- Inside Pipe Cutter

Before Installation

- Have 2x4 blocking installed between studs along the bottom perimeter of framing to back the bottom of wedi wall panels.
- Subfloor is sound, level and meets deflection criteria of maximum $L/360$ as per IRC. Wooden or concrete structural substrates are dry and sufficiently loadbearing. Steel framing is sufficiently loadbearing.
- Floor joists not to exceed 16" o.c. Subfloor panels $3/4$ " T&G EGP or equivalent.
- 2" ABS or PVC pipe is cut $5/8$ " below surface of recessed subfloor and is in the correct position with no floor joist in the way of drain installation (Ligno can be cut to fit which may result in an offcenter drain location)
- Cut a 6 1/2" diameter hole around the pipe center into subfloor to allow Ligno drain recess.
- 2" drain assembly below floor is stabilized and will not sink under water load.
- Only wedi products (Building Panels, Joint Sealant/Subliner Dry and Fasteners) are used for wedi Fundo Shower System assembly.
- Installer has received instructions from wedi technical sales staff or is informed about proper installation methods as described
- wedi shower bases can be cut to size using a skilsaw. The Z notch channel must be remade and cleaned from sawdust or contaminants.
- Where flush transition to floor the channel can be cut away or filled with thinset mortar or a strip of wedi building panel sealed into channel.

Installation instructions wedi Fundo onto wooden or concrete floors



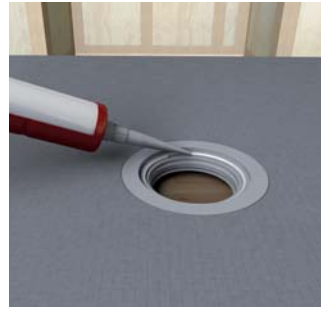
1 Cut $\frac{3}{4}$ " Plywood base out fitting the space of Fundo Ligno. Safely install blocking along floor joists apprx. $\frac{3}{4}$ " below top of floor joists. Adjust for thinset thickness under wedi Ligno base and/or the flooring underlayment installation adjacent to shower area to create a flush transition for waterproofing and tile between floor and shower

area. Re-install $\frac{3}{4}$ " plywood over blocking to have the plywood flush with the floor joists and fill with furring strips on top of floor joists in case the blocking/joist that carry the plywood under wedi base is installed higher than $\frac{3}{4}$ " deep from top of floor joists. Make sure the entire perimeter of the Ligno base is supported by floor joists or adequate

blocking. Make sure the plywood base shows no seams where close to the cut out for the Ligno drain. The cutout around the center of the 2" floor pipe must be 6 $\frac{1}{2}$ " in diameter to allow drain recess. The pipe is cut square and even at $\frac{5}{8}$ " below the recessed subfloor top surface.



2 Assemble the drain unit following the instruction drawing.



3 Set up a continuous $\frac{1}{4}$ " bead of wedi sealant along the top side of the wedi Fundos' valve groove profile.



4 Drop the drain body firmly into the sealant.



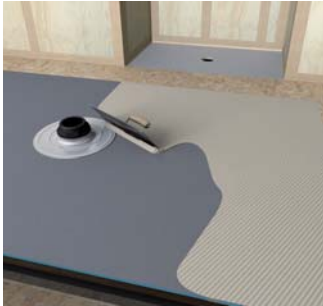
5 Turn the Fundo base upside down and apply the rubber and the fiber gasket.



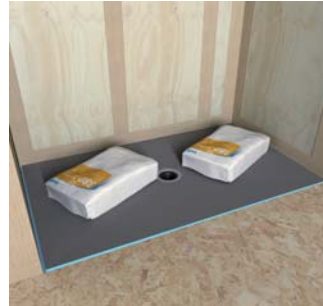
6 Tighten the gaskets firmly to the bases' steel ring using the locking nut. Make sure the drain body is still safely received in the valve-bead of sealant.



7 Skim coat the thinset ANSI 118.4 and comb through with a $\frac{1}{4}$ " x $\frac{1}{4}$ " notched trowel. Channels pointing to the entrance.



8 Trowel the thinset on the rear side of the Fundo again using a 1/4" x 1/4" notched trowel.

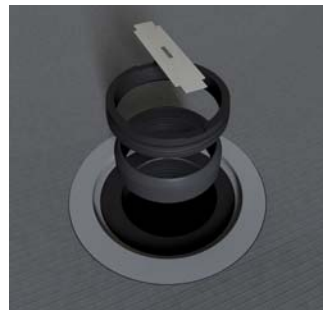


9 Press the Fundo firmly into the thinset bed, ensuring that the installation is level and void free. Apply some weight equally and for at least 30 minutes (thinset bags).



10 Set up the rubber caulking gasket (with the bevelled side up) around the 2" pipe in the subfloor. The rubber gasket must be flush with the upper end of the 2" ABS or PVC pipe.

! Do Not use any Lubricants.



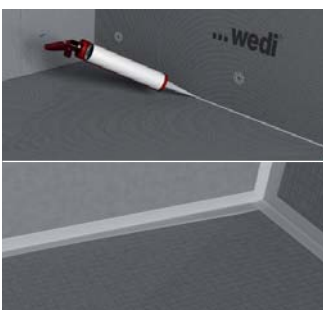
11 Tighten (squeeze) the rubber caulking gasket firmly with the caulking nut (use a flat headed screwdriver) and finally insert the plastic frame and strainer on top (without adhesive). The frame and strainer will be held in a grout joint only once tiling commences.



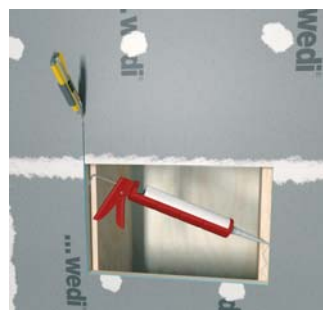
12 Set up a continuous 1/2" bead of wedi sealant along the pans channel on the outer perimeter and only in areas where you can immediately install a building panel into the fresh sealant.



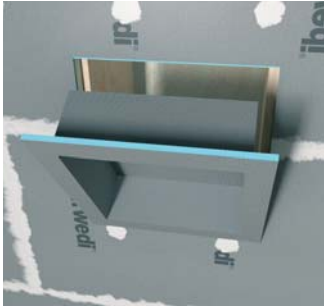
13 Push the wedi panel all the way into the channel of the shower base and its bead of sealant. Smooth out any pushed out sealant on inside seam using a putty knife. Fasten the panels directly to the studs starting 1 ft above the base and at a rate of 1 fastener per 1ft. One extra fastener is set into the seam to the next panel to crate a flush transition.



14 Apply continuous 1/2" beads of sealant between all connections of panels and install with tightly butted seams. Excess sealant must be spread flat with a putty knife. All seams and fastener heads in the assembly are covered with a secondary 1/2" bead of sealant and spread flat. The seams should be covered 1" on either side of seam. All fastener/washers are covered with sealant stretching 1" over the washer edges.



15 wedi Niches are installed in a cut out in the wedi wall and attached with it's flange right into the center of 16 o.c. studs. wedi joint sealant is set along the connection of wall to niche.



16 2 Fasteners each side of the niche are set to create a flush transition to the wall panels. Another 1/2" bead of wedi sealant is spread over fasteners and seams.



17 Apply thinset mortar over wood subfloor and reaching 4" into the Ligno shower base. Fill the Ligno channel with thinset or a strip of sealed on wedi building panel and apply thinset mortar to the lower corner of the wedi wall panels left and right of any entrance using 1/4" x 1/4" notch trowel.



18 Apply a modified thinset (ANSI 118.4 or equivalent) across the wood or cement board floor surface and now apply wedi Subliner Dry Sheet waterproofing membrane overlapping into the Ligno base for 4 inches. Apply wedi's prefabricated outside or inside sealing tape corners and sealing tape as a flashing to the wedi wall panels/Ligno and Subliner dry sheets as applicable. All seams and ends of the Subliner Dry sheets are

covered with a 1/2" bead of wedi joint sealant and spread flat using a putty knife. Your shower is ready for tile once the thinset mortar has hardened! Alternatively to Subliner Dry sheet membrane system wedi building panels in 1/4" or 1/2" thickness can be used as the floor tile underlayment in lieu of cement board and Subliner waterproofing, wedi Building Panel would be installed over plywpop subfloor and overlap and seal into the Ligno

channel. All seams to wedi walls or Ligno base are sealed internally with wedi joint sealant, and are covered with an external 1/2" bead of wedi joint sealant spread flat. Your shower is ready for tiling once thinset under wedi Subliner Dry or wedi Building Panels on floor has cured.

After Installation

- Using a 2" drain plug, the wedi pressure fit drain/sealing gasket is water tested prior to ceramic tile installation.
- All bottom perimeter joints, Subliner joints and vertical joints are

- covered with wedi Joint Sealant. Coverage should be continuously visible for at least 3/4" – 1" on either side of the seam.
- No mastic adhesives are used to install tile in the wedi system. Mini-

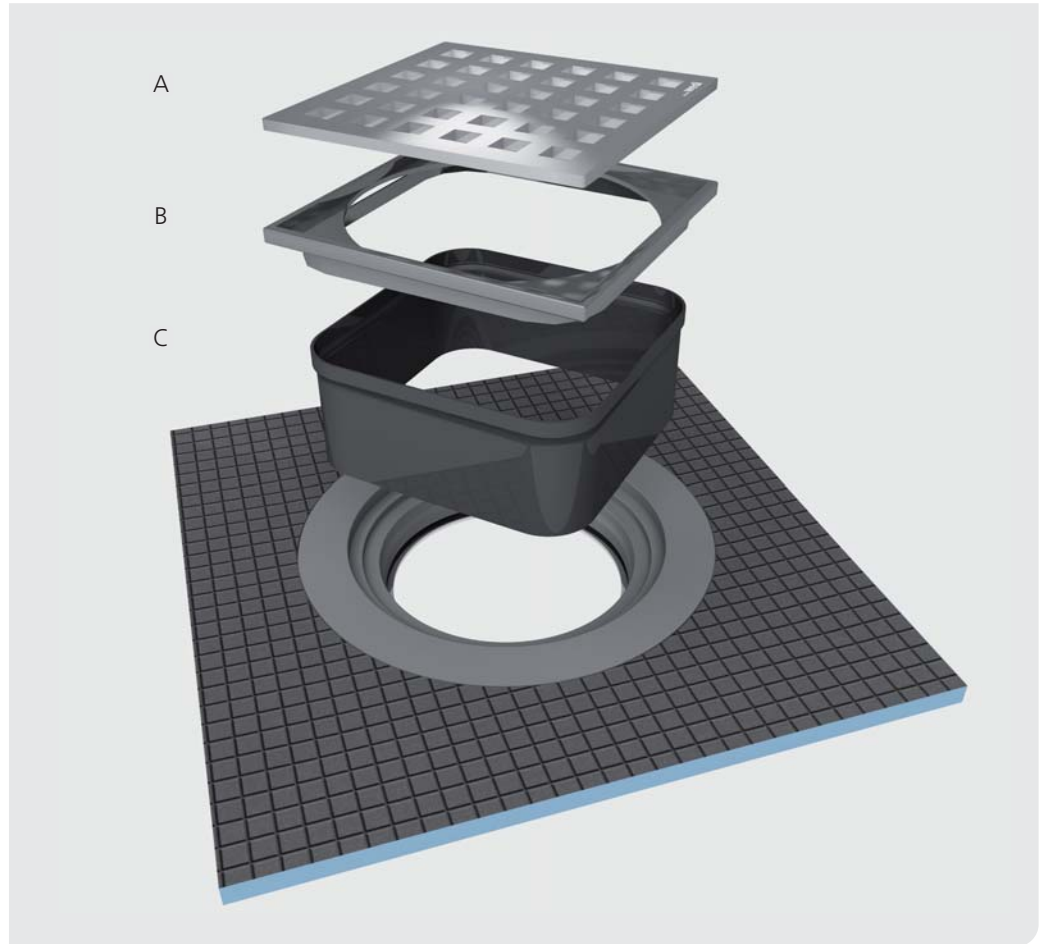
- tile size is 2" x 2" x 1/4" thick.
- Large format tile can be used on wedi Fundo bases. The tiles must be cut where the slope fields meet.

- i** • Where wedi building panels are installed over horizontal surfaces (seats, tubdeck transitions) do not set any fasteners and do not allow the glass door track installation to penetrate the wedi panel or Subliner as it is your waterproofing.
- Make sure that doors are installed tight to contain water inside the shower. Make sure doors are installed to only load bearing reinforced framing.
- Where wedi building panel is installed over corners of a structure showing an angle other than 90° please miter the board edges to gain adhesion surface. Utilize a wedi sealing tape in addition to regular sealing for safety.

wedi Drain Cover Assembly/Insertion

Legend

- A wedi Strainer
- B Strainer Collar
- C Optional Extension Collar



- i** Insert Strainer Collar into base hole (no glue/no screws). Caulk between part and tile to create a flexible grout joint. Extension Collar can be cut to height if part is needed. The caulk joint must not create a water barrier damming up the water draining through the thinset bed into the drain. Therefore the thinset layer must be continuous toward the drain.



wedi corporation
171 S. Gary Avenue · Carol Stream, IL 60188
Toll Free: 877.933.9334 · Phone: 847.357.9815 · Fax : 847.357.9819
info@wedincorp.com · www.wedincorp.com